



FRANGELO

BUILDER CUSTOM LINE • **MODEL** NAVETTA 37 • **YEAR** 2019 • **LENGTH** 37m (121ft)
GUEST 11 • **CABINS** 5 • **CREW BERTHS** 7 •

ASKING PRICE € 13.800.000

◆ OVERVIEW

LOA	37,04 mt / 121,6 ft	Builder	Custom Line
Beam	8 mt / 26,3 ft	Model	Navetta 37
Draft	2,27 mt / 7,5 ft	Boat Name	Frangelo
GRT	289	Material	Fiberglass - VTR
Max/ Cruising speed	15,5 kn / 12 kn	Architect	Studio Zuccon
Range @10kn	3.000 nm	Engines	2 x MAN 1.400hp
Flag	Portuguese	Engine hours	Approx. 2.100
VAT status	Not paid	Generators hours	Approx. 6.000
LY3	MCA compliant	Location	Turkey











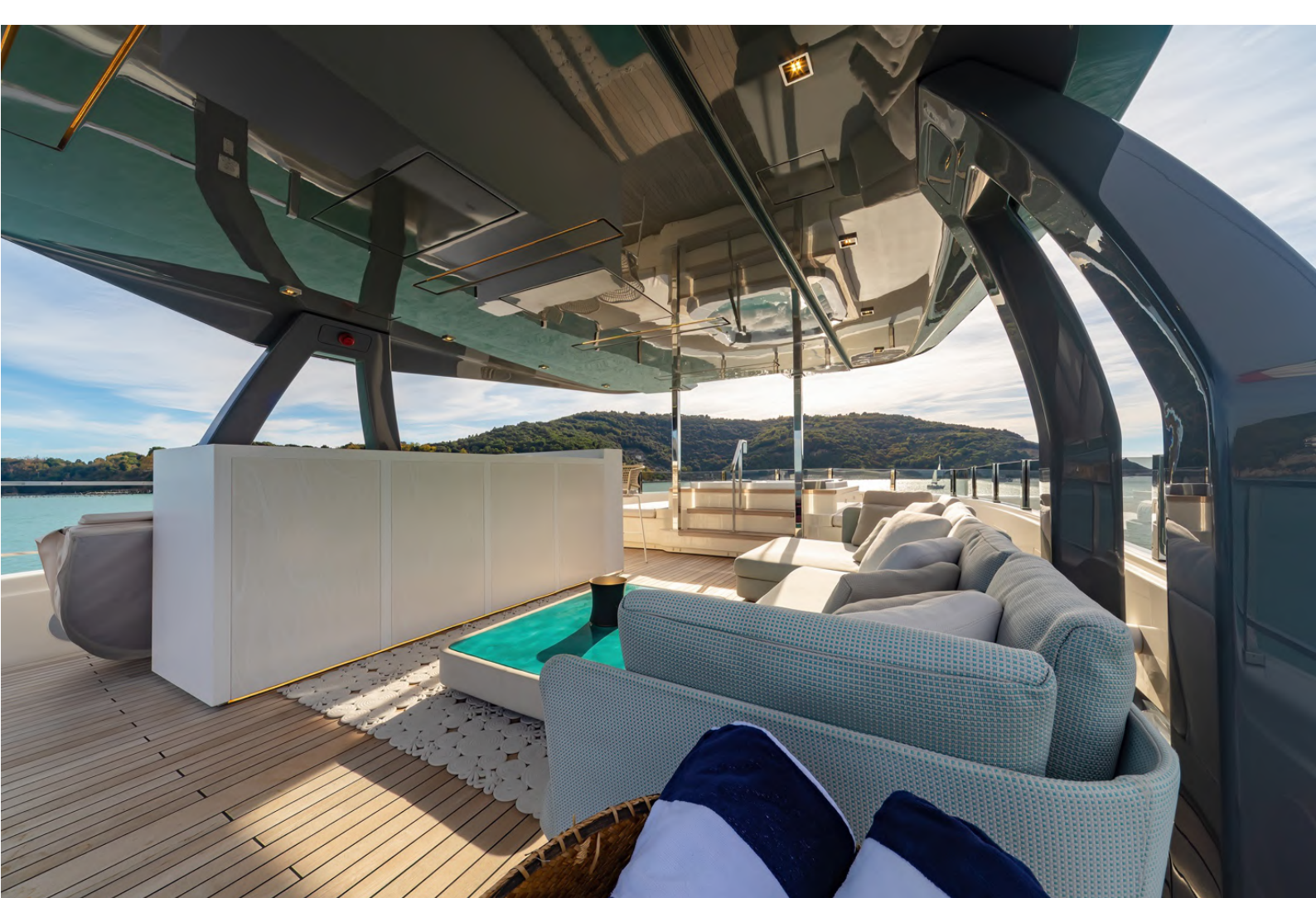


















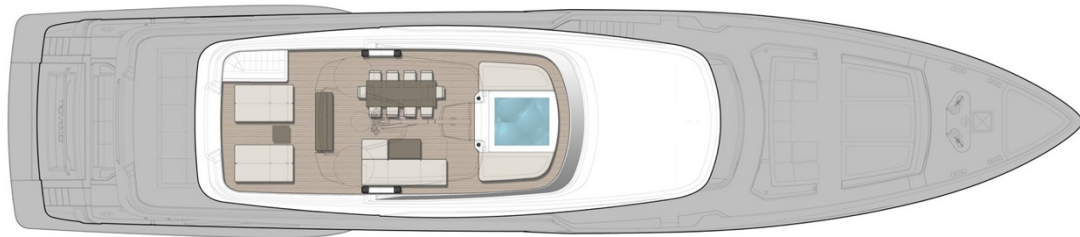


◆ GENERAL ARRANGEMENT

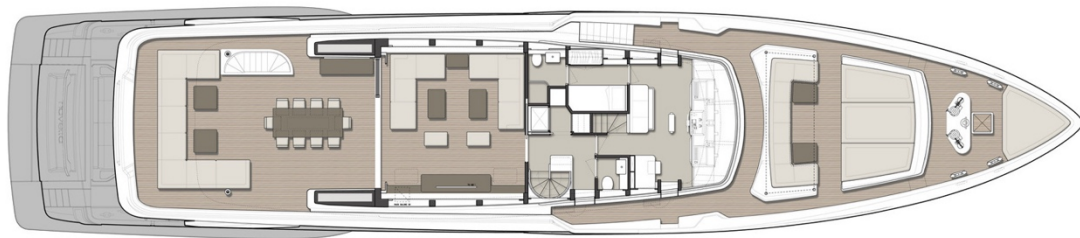
PROFILE



SUN DECK



UPPER DECK



MAIN DECK



LOWER DECK



◆ DESCRIPTION

◆ MAIN CHARACTERISTICS

Length overall	37,04 mt	121,6 ft
Waterline Length (full load)	30,66 mt	100,7 ft
Beam max	8,00 mt	26,3 ft
Max Draft	2,27 mt	7,5 ft
LightShip	185 t	407.855 lbs
Full Load Displacement	225 t	496.040 lbs.
Fuel tank capacity	32.500 l	8.586 US Gals
Fresh water capacity	4.000 l	1.057 US Gals
Grey water capacity	1.500 l	396 US Gals
Black water capacity	1.500 l	396 US Gals
Accommodation for guests	5 cabins	
Max number of guests	11	
Accommodation for crew	4 cabins	
Max number of crew	7	
Classification	C HULL, • MACH, Y Ch, Short Range Navigation, Compliance LY3 Code	

◆ PERFORMANCE

Maximum speed	15,5 knots
Cruise speed	12 knots
Range @ cruise speed (3)	2.000 nm
Range @ 10kn	3.000 nm

◆ MAIN MACHINERY

Engines	2 x MAN 1400 mhp / 1029 kW @ 2300 RPM
Engine model	V12 LE446
Fuel	Diesel
Propulsion	Shaft
Gearboxes	2 x ZF 3050 A
Propellers	Veem
Main generator	70 kW (Kohler 70EFOZDJ)
Auxiliary generator	70 kW (Kohler 70EFOZDJ)
Fin stabilizers	ABT Trac (hydraulic) underway and zero speed
Gyro stabilizers	2 x NG16 + 1 x NG9
Shore voltage and frequency converter	A/Sea

◆ OTHER TECHNICAL EQUIPMENT

Bow thruster / Stern thruster / Tropical air conditioning system with UTA / Fuel filter Alfa Laval MMB 304 / Water maker Idromar 360l/h (duplex 180l/h + 180l/h) / Black water treatment system Hamann / Idrostop system for shaft lines seals / Tender Fuel filling station in garage / Digital chain counters / Aft garage ceiling electrohydraulic travel for hauling and launching the jet ski / Predisposition for the installation of the crane in bow garage / centralized system for engine-inverters-generators oil change

◆ NAVIGATION SECURITY & TELECOM.

Flir thermal night vision CCTV / Super Premium full integrated bridge / AIS Furuno Class B / Monitor Video for Navnet B.B. in crew mess / CCTV 15" video monitor in crew mess / 4G or Wi-Fi internet connection & internal Wi-Fi system / V-SAT predisposition / Radar Furuno Farr / Simrad RG80C Gyrocompass / ECDIS Furuno FMD3200 + charts / Additional repeater for gyrocompass / CCTV NVR system with 8 hidden cameras / CCTV DVR system with 7 cameras

◆ STABILISERS

Gyro system: 2 x Seakeeper NG16 + 1 x Seakeeper NG9
Fins stabilisers: ABT Trac (hydraulic)

◆ APPLIANCES

2 x Washing machine Miele professional / 2 x Dryer machine Miele professional / Miele oven 90cm in galley / Professional Rationale Owen in MD pantry / Miele full height wine cooler in MD salon / Gaggenau full height wine cooler in lobby UD / Mini fridge in master cabin / Waste mincer in galley / Professional Hoshizaki ice maker in MD pantry / Full height fridge in MD pantry / Full height freezer in MD pantry / Blast chiller in MD pantry / fast cycle dishwasher in galley / Miele microwave in MD pantry / Custom fridge and freezer in galley / Fridge in upper deck salon / Fridge in UD cockpit bar furniture (100lt) / Ice maker in cockpit bar furniture (100lt) / Ice maker in bar furniture on Sun Deck (100lt) / Fridge in bar furniture on SD (100lt) / Kenyon texan grill in bar furniture on SD /

◆ ENTERTAINMENT SYSTEM

Sonance external speakers / KVH HD11 Satellite Antenna with receivers in MD and UD salon, 5 cabins / TV55" in main salon / TV55" in master cabin / TV48" in guest and VIP cabins / TV65" in upper deck salon / TV28" in captain cabin / B&O sound system in main salon / 5 + 1 sound system in master cabin / Control of entertainment, A/C, lights and curtains via iPad on all decks /

◆ EXTERIOR & INTERIOR ACCESSORIES

Jacuzzi tub on Sun Deck / Automatic opening for glass aft door in main deck salon (1 panel) / Electric opening for glass door on starboard side main deck dining area / Electric opening for glass door on port side main deck dining area / Automatic opening for glass aft door in upper deck salon (1 panel) / 18 x Underwater lights / 2 x anchor chain 16mm diameter with bar (150mt) / Electrical raising of curtains in main deck salon, in upper deck salon and lower deck cabins / Bimini with 6 carbon poles in bow dinette / Bimini with 2 carbon poles in aft upper deck exterior area / Retractable cleats on swimming platform / Pullman bed in starboard side guest cabin / Dimmer lights in main deck / Plug in shower on bathing platform (hot & cold water) / hand-shower: hot & cold fresh water at bow / hand-shower: hot & cold fresh water in SD Jacuzzi / Umbrella in beach platform / spotlights for anchor chain system / UD exterior side glasses with roll-out hidden canopy for lateral wind protection

◆ TENDERS AND TOYS

Williams tender 565 Diesel Jet

◆ MAIN DÉCOR DESCRIPTION

Light brushed oak main wood / Wood floor in MD and UD salons, lobbies, wheelhouse and captain cabin in white brushed oak by Mardegan / Main deck salon portals in bronze mirror / Carpet in master cabin and lower deck mod. Santushti color Ivory by Jacaranda / Bronze mirror TV frame in master cabin / Emperador lucido crema marble in master bathroom / Sink in day MD and UD heads in Calacatta Reale by Florim / Lower deck cabins portals in Alcantara / Lower deck cabin bathrooms' floor and showers in Calacatta Reale by Florim / Curtains in fabric ZR Smooth / Wall at bow in UD salon in fabric Sacho lino / Corian custom bar furniture in Sun Deck /

◆ FREESTANDING FURNITURE

Cockpit: Armchairs Minotti Big Rivera, coffee table Minotti Rivera, Ottoman Minotti Rivera

Main salon: Baxter sofa mod. Budapest, Armchair Brabbu design Andes, Coffee table Minotti Calder Bronze, Rug Toulemonde bochart, Floor lamp Kelly Wearsler Alma, Coffee table Minotti Joy, Dining table Minotti Romeo, Chairs Minotti Fil Noir Custom.

Master cabin: Chair Minotti Fil noir dining, Jay lounge reclining chair and pouf by Poltrona Frau, coffee table Poltrona Frau Bob

Upper deck salon: Sofa Minotti Freeman, rug Ebru Bohemian dawn, coffee table Minotti Milton Circle, Frau Lloyd sideboard storage

Upper deck exterior aft area: Custom made table in steel and glass, Chairs Minotti Rivera little, Sofa Minotti Florida, Coffee table Minotti Calfield, Armchairs Minotti Colette

Sun Deck: Sofa Cove by Paola Lenti, Coffee table Cove by Paola Lenti, Stools TRIBU, Sunbeds Paola Lenti, Coffee table Frame Paola Lenti

◆ CLASS

M/Y FRANGELO is full MCA compliance and has just completed the 5 year class survey and a deep full maintenance.

Disclaimer

We offer the details of this vessel in good faith but cannot guarantee or warrant the accuracy of this information nor warrant the condition of the vessel. Pictures of the vessel may be taken from the catalogue. This document does not represent in any case a contractual term.